



VBUSB-200 USB-PLC Adapter Installation Manual


For Microsoft® Windows® 2000 / XP / Vista™ /7/8/8.1/10

☆☆☆ **Please Read This Instruction Before Install the Adapter** ☆☆☆

1. Introduction

The **VBUSB-200** adapter is your smart and convenient accessory for connecting a  **VB, VH** or **M** series PLC to your USB-equipped Windows® host computer. Just need to plug its PC side USB connector into your PC standard Type-A USB port and attach PLC side to the Programming Tool Communication Port (CP1) of  PLC, then it provides a bridge connection simply. It allows a simple and easy way of adding PLC connections to your PC without having to go through inserting a serial card and traditional port configuration.

2. Features & Specifications

- Easy Plug and Play Installation, Smart USB to a  **VB, VH** or **M** series PLC (CP1) interface
- Full Compliance with the Universal Serial Bus Specification v1.1 automatic handshake mode
- Provides 1.92 Mbps Dual Buffers for upstream and downstream data transfer
- No IRQ resource required; Bus Powered - no separate power supply or battery required

3. System Requirements

- Windows® 98 se, ME, 2000, XP, Vista™, 7, 8, 8.1 or 10 operating system
- For the Windows® 8 or newer systems, must use the new black edition of **VBUSB-200**.
- Intel® Pentium™ 133MHz with USB 1.1 A-Type port or better compatible computer

4. Installing the Device

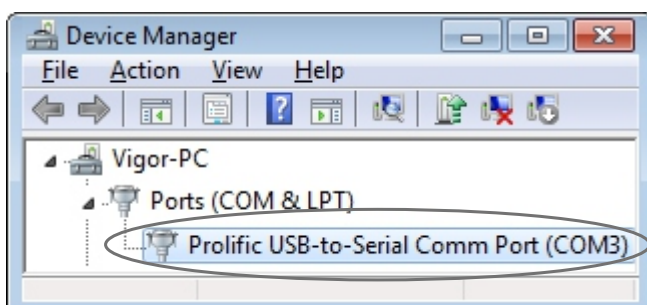
※※※ Before you plug this adapter into a computer, must finish these procedures below ※※※

- ① Visit our official site (<http://www.vigorplc.com>) to download the newest Programming Tool software **Ladder Master** . Execute the “setup.exe” to install the **Ladder Master** and the driver of the **VBUSB-200**.
- ② It is available to execute the InstallShield program “**VBUSB_PL2303_Installer.exe**” independently, then at the InstallShield Wizard, click [**Next** >] to continue and start the installation.
- ③ The End User License Agreement (EULA) window will be shown, click [**I accept the terms of the agreement**] and [**Next** >] to continue.
- ④ Wait until the Wizard informs you that driver installation is successfully installed. Click the [**Finish**] button to close the Wizard. Reboot the system then plug in the PC side of **VBUSB-200**.

5. Installation Verify and Port Assign


This section will guide you to check the installation and to change the Com Port setting if it is necessary:

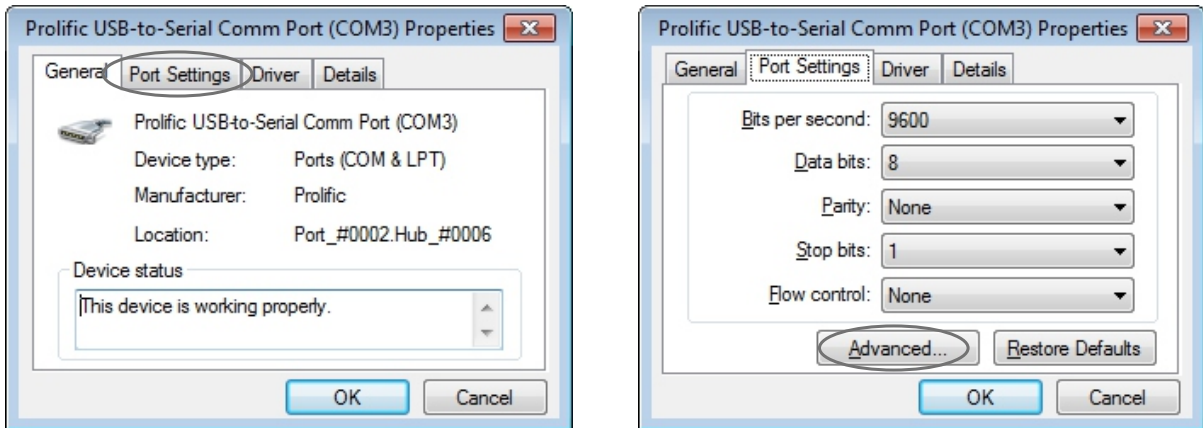
- ① When the **VBUSB-200** has connected to the computer, you can verify the installed status that is under the [**Control Panel**] --- [**System**] --- [**Hardware**]. Then click [**Device Manager**] and double-click on [**Ports (COM & LPT)**] to expand the list. If the “**Prolific USB-to-Serial Bridge (COM 3)**” is on the list, this means the driver has already installed and the **VBUSB-200** is occupying the COM3.



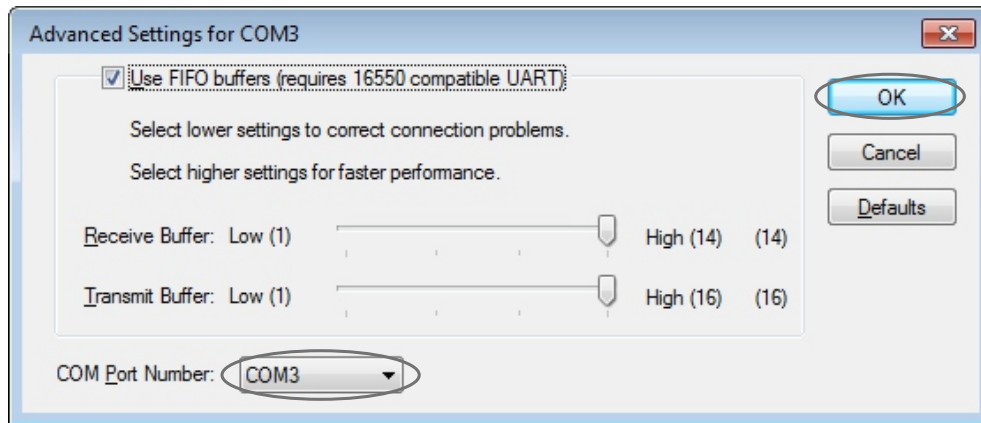
Note:

The occupied Com Port may vary with different computer and setting.

- ② For the Programming Tool *Ladder Master*, it is allowed to use the COM1 ~ COM16 to contact with a  PLC. If the occupied Com Port is not at this available range, please change the port.
- ③ To change the occupied Com Port, could double-click on [Prolific USB-to-Serial Bridge (COM 3)]. Its properties window will pup-up then choose the [Port Settings] and [Advanced...].




In the [Advanced Settings] there is the [COM Port Number:] could be selected. Choose an unoccupied port between COM3 ~ COM16 for the Ladder Master then click the [OK] to exit.



- ④ After finish those settings, the computer's USB port could connect with a  PLC's CP1 via this adapter.

6. Driver Uninstall

If a *VBUSB-200* has connected to a computer and it has been installed or caught an unsuitable driver, under its [Control Panel] will show an exclamation mark  for a USB-Serial Controller. That should follow the instruction below to uninstall the incorrect driver.

- ① Remove the *VBUSB-200* adapter from the computer and run the “*VBUSB_PL2303_Installer.exe*” again.
- ② The InstallShield Wizard will pop-up a Confirm Uninstall window, click [Yes] to uninstall the old one.
- ③ Wait for the Uninstall Complete message then click [Finish] to exit and restart the computer.

★ Driver download website:

Please visit **VIGOR ELECTRIC COPR.** at <http://www.vigorplc.com> for more information.

Download ➡ Driver ➡ *VBUSB-200* Installation Manual

Disclaimer

Information in this document is subject to change without notice. The manufacturer does not make any representations or warranties (implied or otherwise) regarding the accuracy and completeness of this document and shall in no event be liable for any loss of profit or any other commercial damage, including but not limited to special, incidental, consequential, or other damages.

No part of this document may be reproduced or transmitted in any form by any means without the express written permission of the manufacturer.

All brand names and product names used in this document are trademarks or registered trademarks of their respective holders.